

SUPERCLOSET®

SUPERBOX

SMART GROW CABINET



INSTRUCTION MANUAL





WELCOME TO THE FAMILY

**Congratulations, and thank you for choosing SuperCloset.
You now have the world's best grow cabinet.**

These instructions will guide you through the process of setting up your **SuperBox**. Please read through the **entire** instruction manual before you begin, including any and all instructions that come with the individual components.

Lets take a look at the layout and components of your SuperCloset.



COMPONENTS



CARBON AIR FILTER



KIND LED X40s DRIVERS, DAISY CHAIN, POWER CORD



WATER PUMP



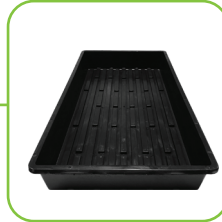
INTERNAL CIRCULATION FAN



OR



SOIL POTS



SOIL POT TRAY 1/4" AIR PUMP TUBING



AIR STONES



3" NET CUPS



LOTUS NUTRIENTS SAMPLES



pH TESTING KIT



SHOT MEASURING GLASS



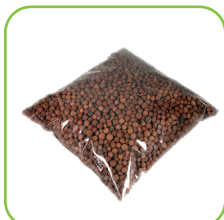
GFCI



TDS METER



NET TRELLIS, HOOKS, ELBOW W/ EXTENSION



CLAY ROCKS



1" GROW PLUGS



SMART PLUG



POWER STRIP



Carefully unbox your SuperCloset and remove all contents from inside the cabinet.

Unpack the contents of the cabinet, as well as any components packaged inside the cabinet reservoir.

3

A large, brown cardboard box is shown. It has a red label on the front with the text 'To be used' and a white arrow pointing upwards. There is also a green label on the top of the box with the word 'TOP' in green.

[illegible]

Prior to setup, make sure you have all of the necessary components by cross referencing with the QAC (Quality Assurance Checklist). Take this time to familiarize yourself with each of the components.

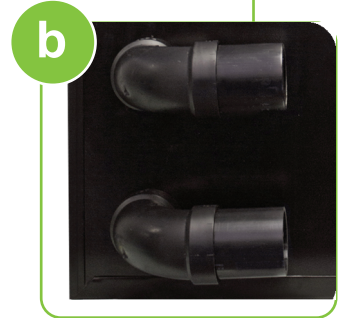
We are now ready to set up the SuperCloset

1. Make sure the cabinet is in its final location, as it will be more difficult to move when fully assembled. We will not be plugging in any of the components just yet. Let's get everything in place first.

SUPER GROW TIP:

Use masking tape and a marker to label the power cords of your components at the plug to help identify your components later in the assembly.

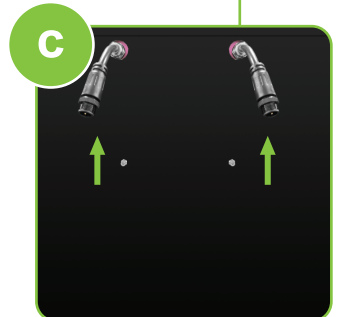
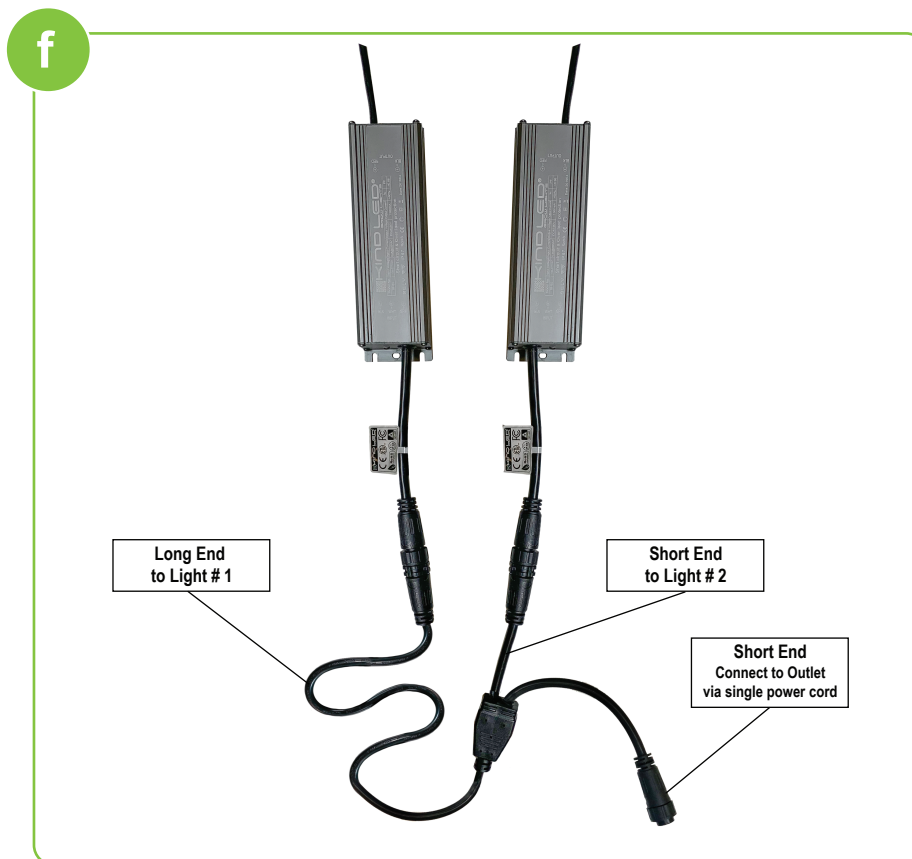
2. Locate the two 2" elbows (image a). From the outside of the cabinet, insert the end with the foam tape into the 2" hole located on the exterior back of the cabinet. Repeat this step for the 2nd elbow into the upper hole. Be sure to adjust the elbows so the openings face towards the center of the cabinet (image b). This will allow enough slack for the power cords to reach the power strip.
3. Locate the power cord for the Carbon Filter and thread the cord through the upper hole found on the lower interior of the cabinet.
4. Locate the internal circulation fan (image c). Note the "S" hook connected to the base of the fan. This hook will fit into one of the two provided notches located on the backside of the inner door frame (image d). Mount the fan on the lower notch. As your plants grow taller, move the fan to the upper notch. Ideally the fan will blow air across the top of the plants. Thread the power cord through the upper hole found on the lower interior of the cabinet (same as the light power cord).



Connecting your Kind LED X40 Lights

NOTE: *The two (2) pre installed Kind LED X40 lights have a protective plastic film on the lenses. This **MUST** be removed prior to operation (image a).*

3. Locate the two (2) LED drivers, daisy chain, and the power cord (image b).
4. Locate the two (2) X40 LED cord ends fed through the rear of the cabinet and attach one driver to each of the cords (image c).
5. Mount the drivers to the rear of the cabinet, via the pre installed screw. Slide the driver horizontally, at slight angle, and line up the center hole in the driver with the screw (image d). If the hole in the driver will not slide over the screw, try again from the opposite direction. The drivers will simply hang from the screws (image e).
6. Find the long end of the daisy chain, attach to light # 1. Connect the short end of the daisy chain to light # 2 (image f). Connect the power cord into the remaining short end of the daisy chain, but **do not** plug anything into the power strip yet.



SuperPonic 8 System Assembly

1. Remove the lid from the SuperPonic 8 system and set it aside for now. Notice the channels located on the rim of the reservoir (image a). These channels will be for the placement of your Air Pump Tubing and Water Pump power cord.

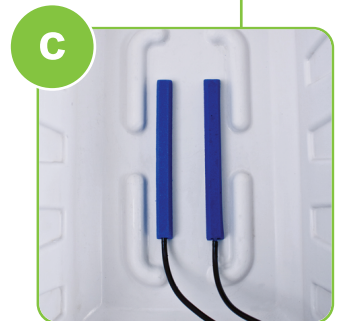
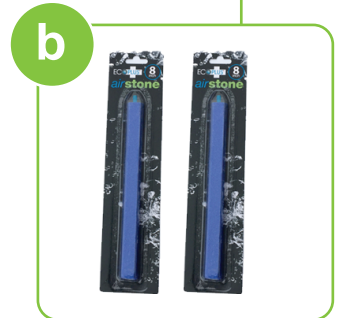
AIR PUMP AND AIR STONES

2. Locate the two blue Air Stones included in your shipment (image b). Place the Air Stones at the bottom of the SuperPonics reservoir. *Note: the airstones have a male end that will fit in the black Air Pump tubing.*
3. Locate the black 1/4" Air Pump Tubing and connect to the end of the Air Stones. Arrange the tubing into the channels located on rim of the Reservoir (image c).
4. Locate the Air Pump included in your shipment (image d). Connect the open end of the black tubing from the Air Stones to the metallic outputs located on the Air Pump.

NOTE: THIS PUMP SHOULD NEVER BE PLACED IN WATER

SUPER GROW TIP:

Your plant roots need and love oxygen! It is extremely important to the health of the plants that you keep your Air Pump and Air Stones running at all times when the system is in use.



SuperPonic 8 System Assembly

7. Locate the Water Pump (image a). Attach the supplied 1/2" fitting to the top of the Water Pump.

NOTE: *Read the instructions for the water pump, as they contain valuable information on how to maintain this component. THIS PUMP SHOULD NEVER RUN WHEN NOT FULLY SUBMERGED IN WATER.*

8. Place the Water Pump in the SuperPonics® Reservoir near end with the channel in the rim. Arrange the power cord of the Water Pump into the channel located on the rim of the Reservoir (image b).

9. Locate the reservoir lid and run the short end of the preassembled Ball Valve Drain Tube to the fitting protruding from the top of the reservoir lid (image c).

10. On the under side of the lid, locate the open end of the black tubing. Attach the end of the tubing to the connector on the top of the Water Pump. Return the lid to the Reservoir (image d).

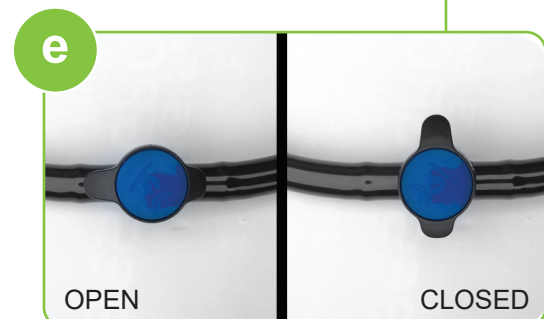
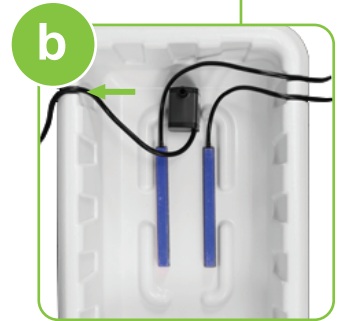
11. Now we can place our Net Cups into the openings of the top of the reservoir. Once in place, arrange the top feed hoses to the center of the net cups.

12. Notice the length of tubing located on the top side of the reservoir lid (image e). This is your Reservoir Drainage Tube. By opening the valve (turning parallel to the tube) and turning the pump on, you can easily drain your reservoir. See (image e) for open/closed positions.

13. Place the SuperPonics system and Air Pump inside the cabinet with the Drainage Tube towards the front.

14. Now we can run our Air Pump and Water Pump power cords through the lower opening in the back of the cabinet.

NOTE: *Valve should always be in the CLOSED position, unless you are draining your reservoir.*



Final Assembly

1. Locate the power strip (image a), the GFCI Protector (image b), the two Smart Plugs (image c)

DO NOT PLUG IN THE POWER STRIP YET.

2. Plug in the following from left to right:

- 1) Smart Plug #1

Once the Smart Plug is plugged in, plug in the LED power cord

- 2) Internal Circulation Fan

- 3) Carbon Filter Fan

- 4) Air Pump **(Hydro Only)**

- 5) Smart Plug #2

Once the Smart Plug is plugged in, plug in the Water Pump **(Hydro Only)**.

a



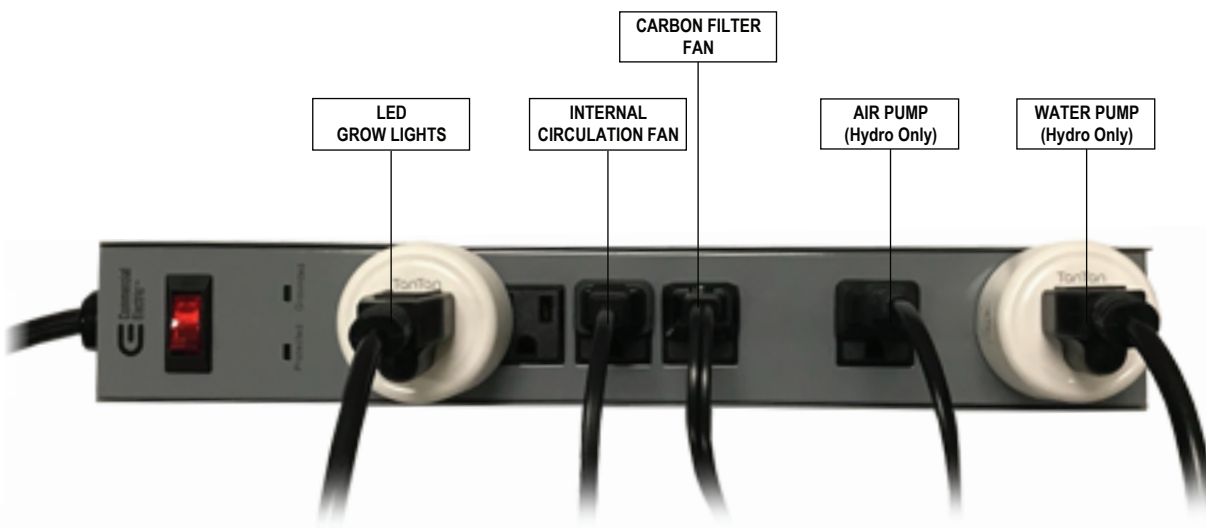
b



c



Properly configured Power Strip Should look like this



Almost Done

3. At this time, add water to your reservoir. When filled to the appropriate levels, the SuperCloner reservoir will hold about 1.5-2 gallons of water. The SuperPonic 8 reservoir will hold about 2-3 gallons.

SUPER GROW TIP:

Your reservoir should always be filled at least halfway. In the beginning stages, we recommend maintaining a water level extremely close ($\frac{1}{2}$ " - 1") from the bottom of the net cups, but not touching (image a). The water should remain at this level until an evident root structure begins to develop.

WATER PUMP TIMER SUGGESTED SETTINGS

EARLY STAGE

15 MIN.

EVERY 6 HOURS

MATURE STAGE

15 MIN.

EVERY 3-4 HOURS

a



b



4. Plug the GFCI Protector (image b) into any 110v wall socket. With the power strip turned OFF, plug the power strip into the GFCI Protector.

NOTE: DO NOT POWER UP YOUR CABINET YET!

5. Now that everything is plugged into the power strip, let's verify some important steps:

- 1) LED Light is properly hung.
- 2) Watering System tube is securely fastened to the top of the Water Pump.
- 3) Both Reservoirs are filled with water and Water Pump is fully submerged.
- 4) Air Pump is next to (NOT IN!) the reservoir.
- 5) Light Power Cord and T5 Power Cords are plugged into Smart Plug#1.
- 6) Water Pump Power Cord is plugged into Smart Plug #2.
- 7) Power Strip is off and plugged into the GFCI Protector.

6. After verifying all of the above, it's time to turn on your SuperCloset. Turn the power strip switch to the ON position, and the system should spring to life before your very eyes!

